

FOR IMMEDIATE RELEASE

“ONWARD”

Paintings and Mixed Media Works by Bron Wynn Kalis
Avenue 12 Gallery
1101 Lake Street at 12th Avenue
San Francisco, CA 94118

Exhibition Dates

November 7 to January 4, 2024

Reception with the artist Sunday, November 17th : 2 to 5 pm

Avenue 12 Gallery is proud to present **Onward**, an exhibition of paintings and mixed media works by Bron Wynn Kalis, whose work delves into the essence of self-expression through a distinct visual language. She approaches each piece with an understanding of art as a form of communication that transcends words. At the core of her practice is the study, contemplation and action of synthesizing complex design elements within each painting.

On view are her three current series. The *Alignment* series is a powerful exploration of stability and disruption. The *Myth-Making* series refers to stories, symbols, and archetypes that explore being human, and the collective human experience. In the *Conceal and Reveal* series highly textured layers are concealed and revealed. Nothing is truly lost but instead becomes a part of the whole.

Ms. Kalis’ work has been recognized in juried exhibitions and has found a place in personal collections both nationally and internationally. She lives in the North Bay and has her studio in Berkeley.

“She is a master: her paintings have depth, soul, majesty and are visually striking. Bron’s paintings have energy and hope, as she invigorates surfaces with bold swaths of color, inviting a long and repeated look.”

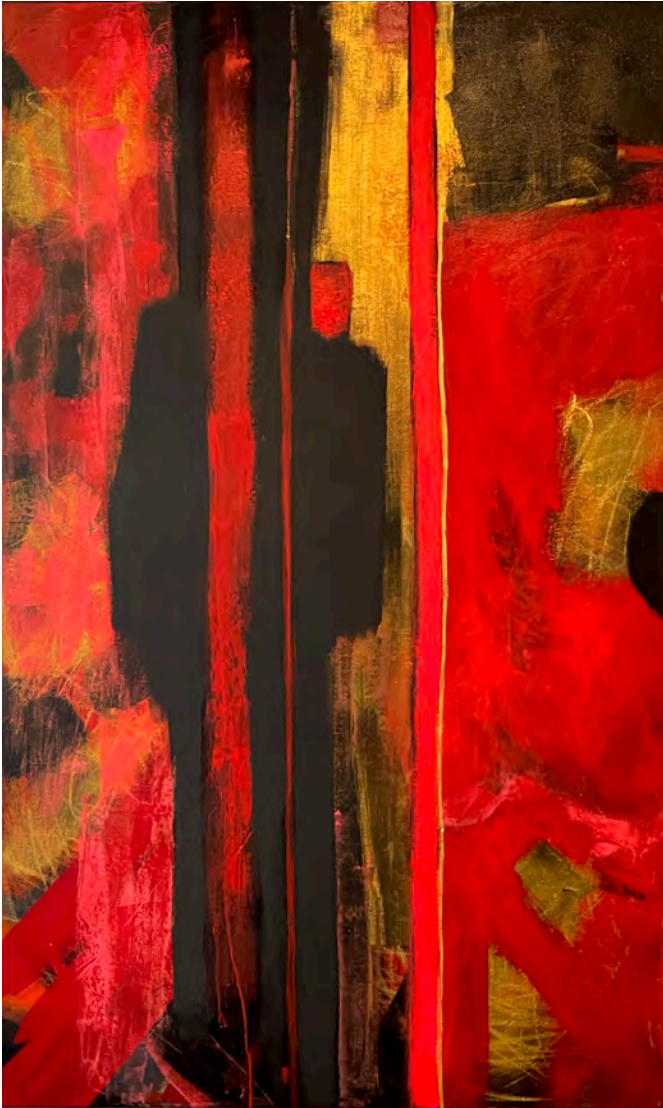
– Claire Carlevaro

Founder, Art Exchange Gallery

About the Gallery

Avenue 12 Gallery is a contemporary art gallery in San Francisco with a focus on paintings by emerging and mid career Bay Area artists.

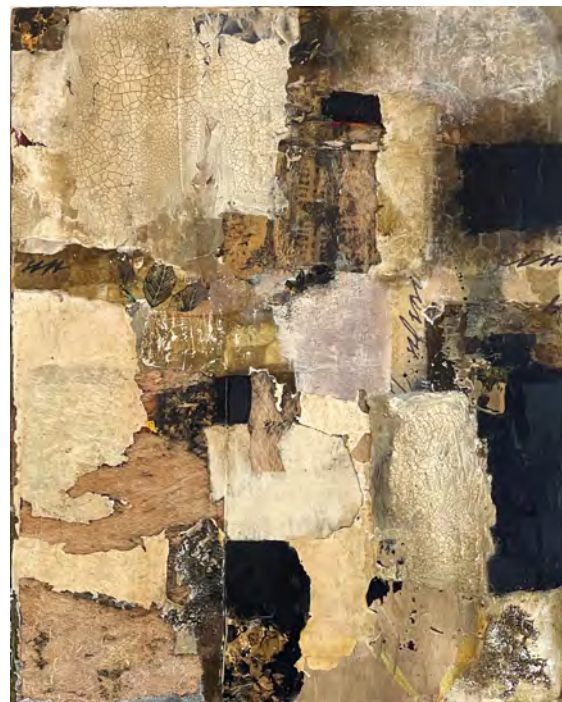
Media Contact: Vince Meyer
avenue12gallery@icloud.com
(415) 750-9955
www.avenue12gallery.com



Bron Wynn Kalis
"Alignment I"
60×36 acrylic on canvas
from the *Alignment* series



Bron Wynn Kalis
"Demeter"
48×36 acrylic on canvas
From the *Mythmaking* series



Bron Wynn Kalis
"Beautiful Vulnerability"
20×16 acrylic on canvas
from the *Reveal and Conceal* series